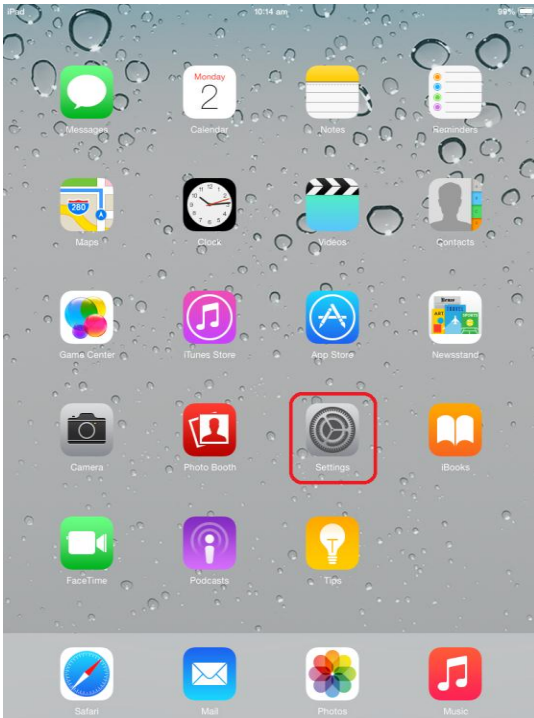
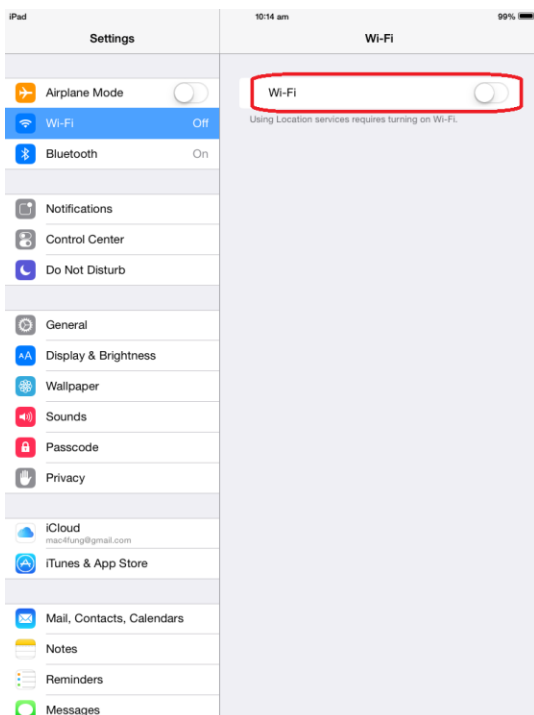


## Procedure to configure Apple iPad to support Universities via CSL

- 1 Turn on your iPad and navigate to the home screen. Locate and Tap the **Settings** icon.



- 2 Tap the **Wi-Fi** button.



3 While you are at CSL Hotspot, ensure that WiFi is turned **ON** and tap "**Universities via CSL**".



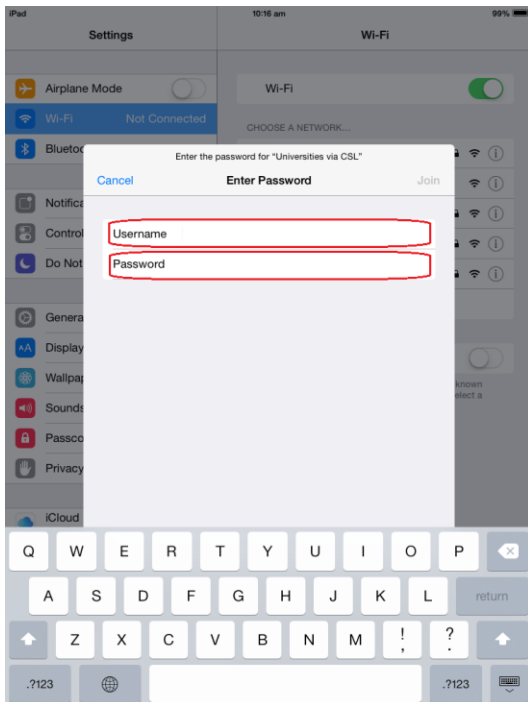
4 Enter your username and password.

a. For Student

Username: **Student\_LoginID@centennialcollege.hku.hk**  
Password: **Learner Portal Password**

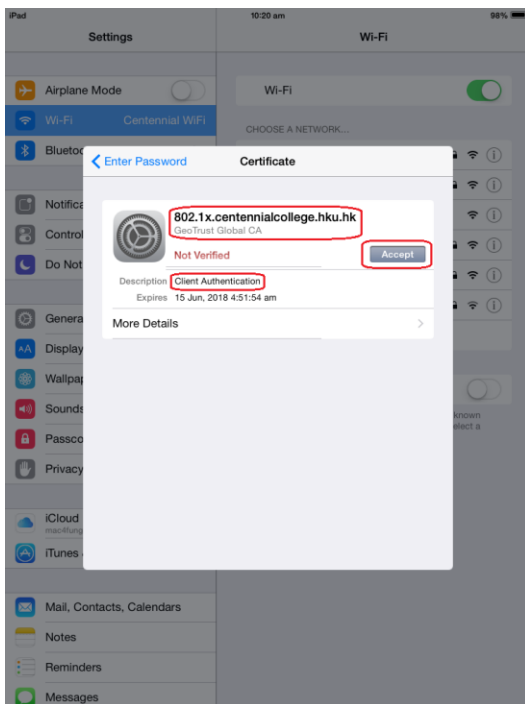
b. For Staff

Username: **Staff\_LoginID@centennialcollege.hku.hk**  
Password: **Staff Intranet Password**



5 Tap **Join**

6 You will be asked to accept the certificate, **802.1x.centennialcollege.hku.hk**, signed by **GeoTrust Global CA** the first time you connect. Click **Accept** to accept the **Client Authentication**.



7 You should now see "**Universities via CSL**" as your selected network.



8 Open the Internet browser, go to <http://www.google.com>.